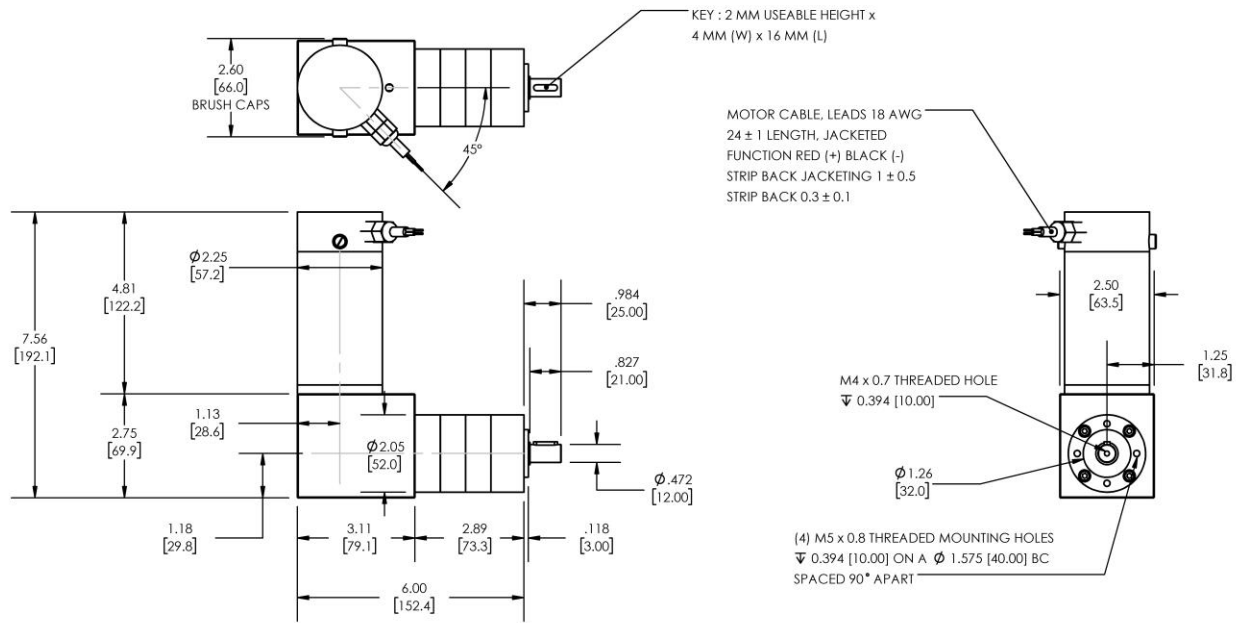


**Model Number:**

## MMP D22-490A-12V GRA52-068



DIMENSIONS ARE INCHES [MM] UNLESS OTHERWISE STATED

PLANETARY GEARMOTOR OUTPUT PARAMETERS:	VALUE	UNITS	TOLERANCE
Gearhead Ratio (exact)	68.06 : 1		
Gearhead Shaft Output Speed (at full-load)	35	RPM	MAX
Gearmotor Rated Continuous Torque	128	In-Lbs	MAX
Gearmotor Rated Peak Torque	<b>294++</b>	In-Lbs	----
Gearhead Standard Backlash	48	Arc Minutes	MAX
Gearhead Efficiency	70%	----	----
Output Shaft Radial Load Capacity	102	Lbs	MAX
Output Shaft Axial Load Capacity	34	Lbs	MAX
Gearmotor Total Weight	6.9	Lbs	MAX

**++ All Peak Torque values are dependent upon duty. Contact our sales office for details.**

DC MOTOR PERFORMANCE PARAMETERS:	VALUE	UNITS	TOLERANCE
Rated DC Voltage	12	DC VOLTS	----
Rated Continuous Current	10.1	AMPERES	----
No-Load Speed	3529	RPM	MAX
Rated Speed	2393	RPM	+/- 15%
Rated Continuous Power Out	77	WATTS	+/- 15%
Rated Continuous Torque	43	OZ-IN	----
Peak Torque (motor only)	99	OZ-IN	----
No-Load Current	0.94	AMPERES	MAX
Back EMF Constant (Ke)	3.4	V/KRPM	+/- 10%
Torque Constant (Kt)	4.7	OZ-IN/AMP	+/- 10%
DC Armature Resistance	0.38	OHMS	+/- 15%
Armature Inductance	0.31	mH	+/- 15%
Armature temperature	155	DEG. C	MAX

**NOTES:**

- ENCODER & BRAKE OPTIONS AVAILABLE - [FOLLOW THIS LINK FOR DETAILS](#)
- NEMA MOUNTING FLANGE OPTION AVAILABLE - [FOLLOW THIS LINK FOR DETAILS](#)

# MIDWEST MOTION PRODUCTS, INC

DESIGN, MANUFACTURING & DISTRIBUTION - MOTION CONTROL EQUIPMENT

[www.midwestmotion.com](http://www.midwestmotion.com)

email: [sales@midwestmotion.com](mailto:sales@midwestmotion.com)